



Agence de l'Environnement et de la Maîtrise de l'Énergie

# **BIOREFINERY STATUS IN FRANCE**

**Maurice DOHY**  
**Head of Bioresources Department**  
**ADEME**



# BIOREFINERIES

## Our biorefinery concept (1)

### Biorefineries : Biomass processing integrated systems

- Combining energy (heat, fuel, electricity)  
and chemicals/materials/food production
- Intended to :
  - reduce GHG emissions and fossil energy dependency
  - maximise the use and added – value of biomass
  - improve energetic balance
  - open, new agroforestry markets
  - boost industrial innovation
  - increase employment
  - etc...



Agence de l'Environnement et de la Maîtrise de l'Énergie



# BIOREFINERIES

## Our biorefinery concept (2)



Agence de l'Environnement et de la Maîtrise de l'Énergie

- A dynamic concept evolving with time and economic context
- Its application potential is :
  - depending on the type of feedstock used
  - based on actual market and industrial conditions



# BIOREFINERIES

## Main examples in France



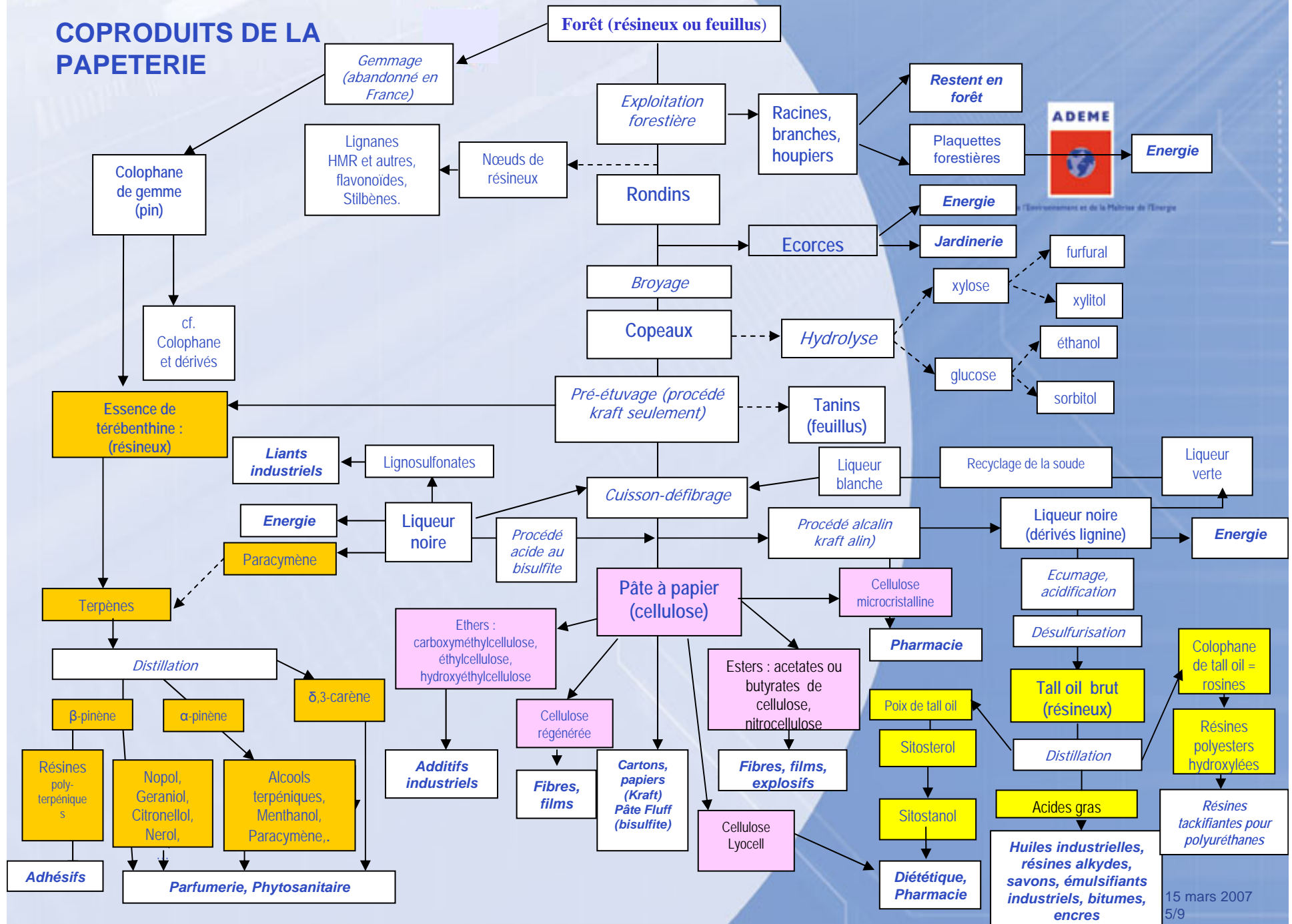
Agence de l'Environnement et de la Maîtrise de l'Énergie

- Pre-biorefineries (existing) :
  - wood - paper
  - wheat/maize – starch
  
- New-biorefineries :

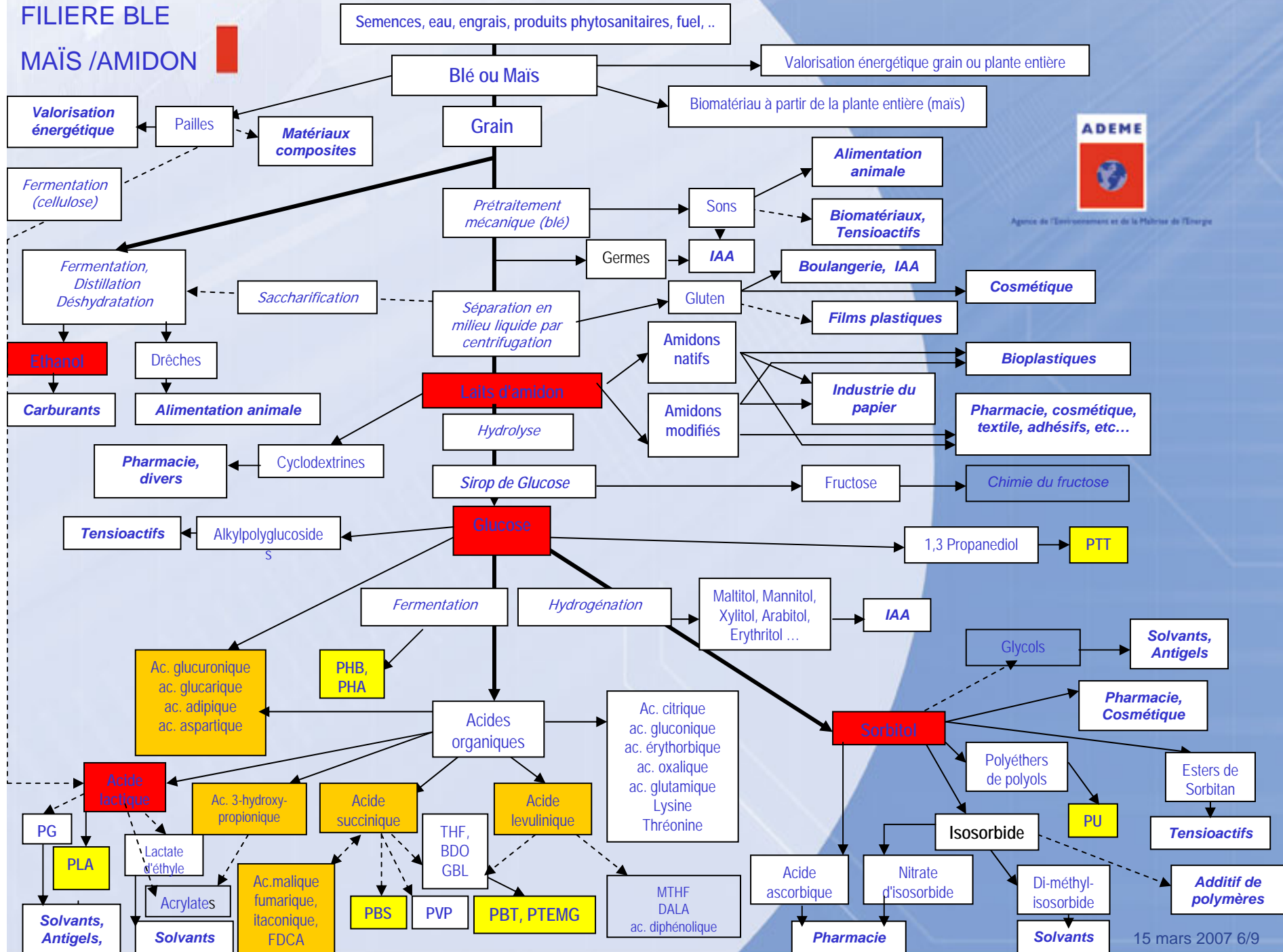
Driver = biofuels

  - rape seed / sunflower - biodiesel
  - wheat / sugar beet - ethanol

# COPRODUITS DE LA PAPETERIE

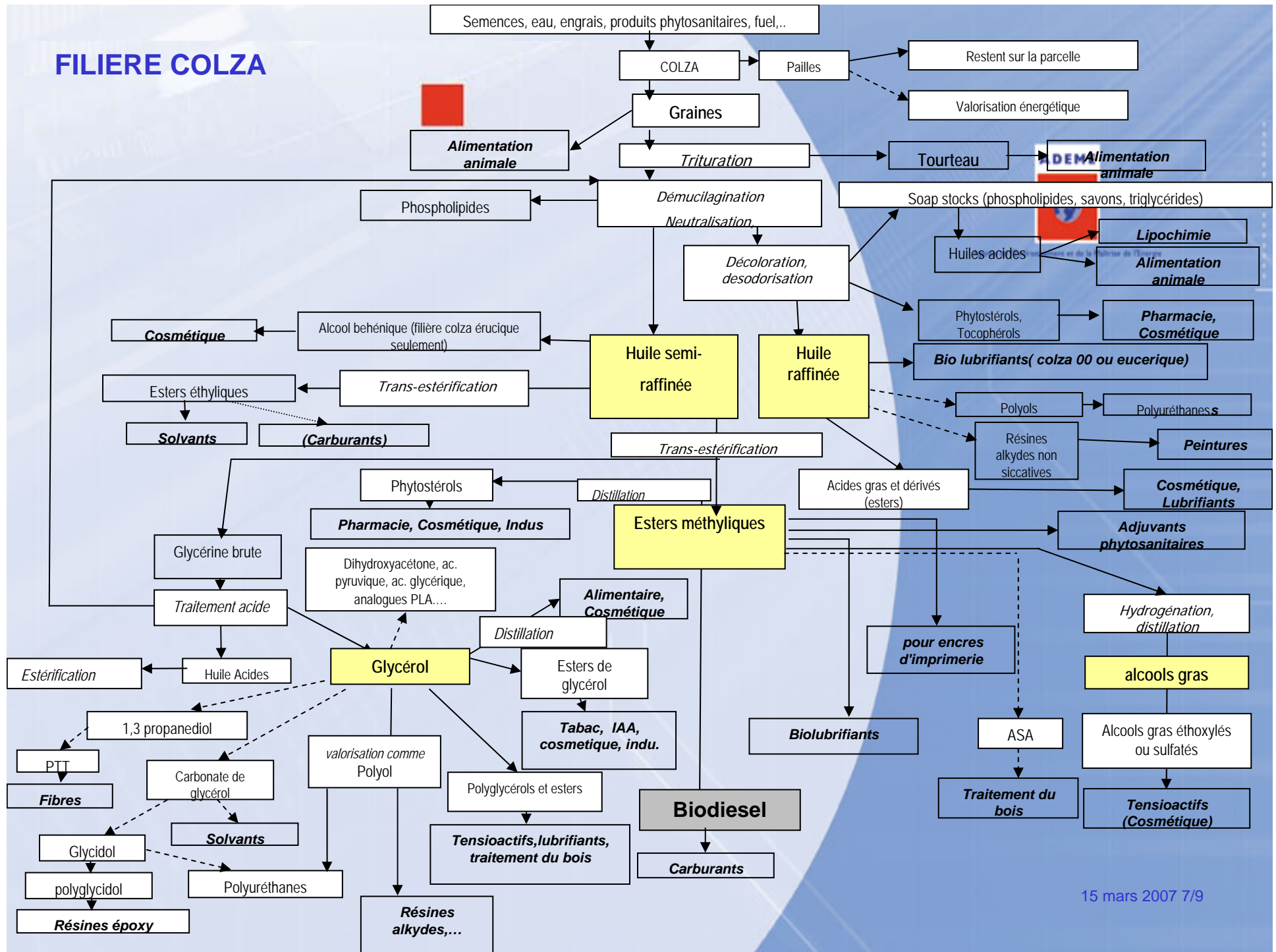


# FILIERE BLE MAÏS /AMIDON

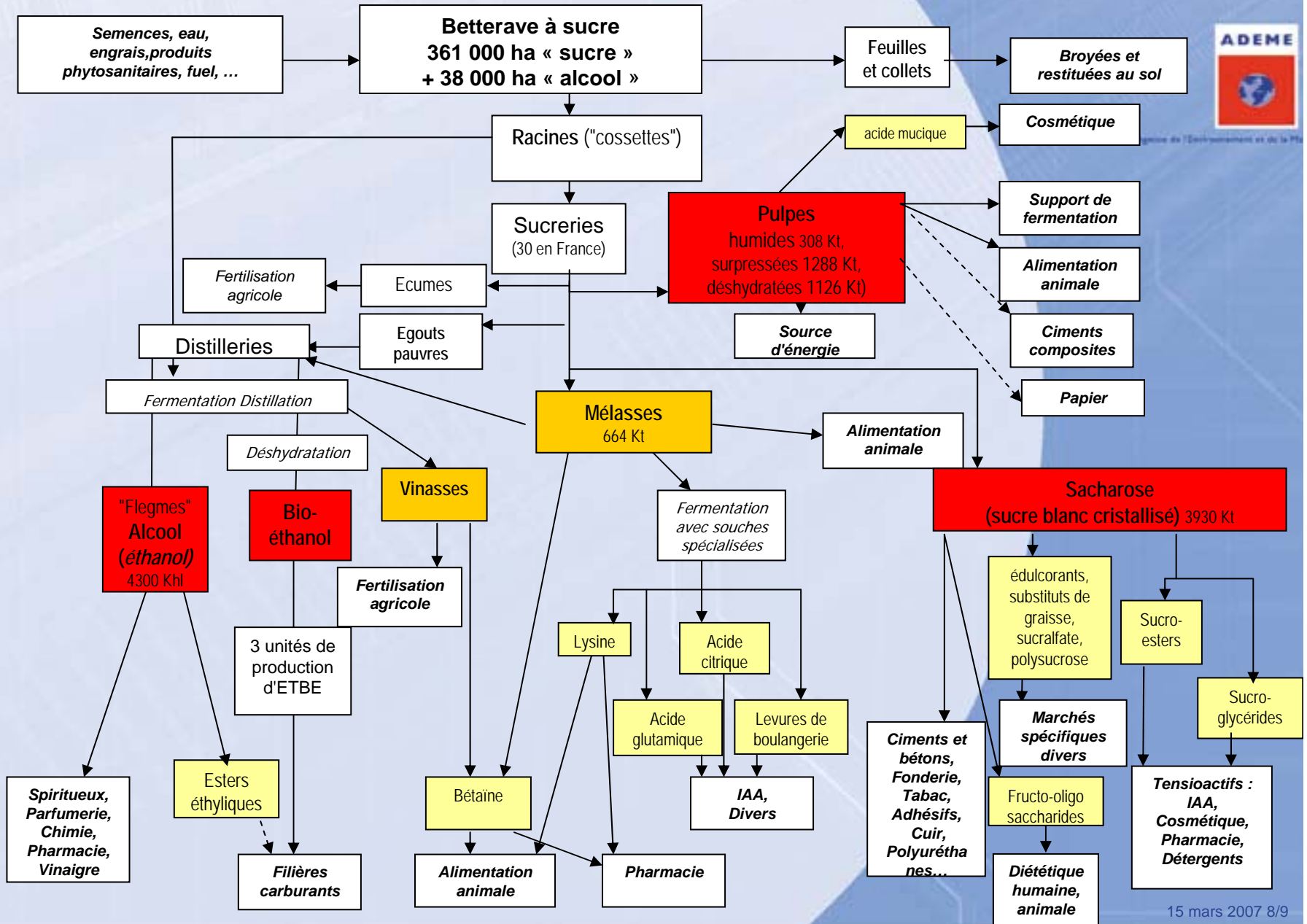


Agence de l'Environnement et de la Maîtrise de l'Énergie

# FILIERE COLZA



# FILIERE BETTERAVE





# BIOREFINERIES

## Research

- National Programme for Research on Bioenergies
- National Programme for Research on Bioproducts
- Industrial Innovation Agency
  - Starch biorefinery



Agence de l'Environnement et de la Maîtrise de l'Énergie